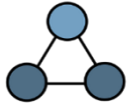


AVISTA iESGweb Platform

A solution that brings you
convenience, cost effectiveness, and change.

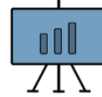


WHY USE OUR iESGweb PLATFORM?



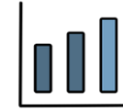
Team Collaboration

Stay productive no matter where the teams are and access to data anytime.



Expand Visibility

Centralized database keeps the management of files under organizational control.



Advanced Analytics

Safeguard data quality by comprehensive data validity checks.



Secured Data Storage

Data is stored on cloud-based system with high confidentiality and security.



SaaS

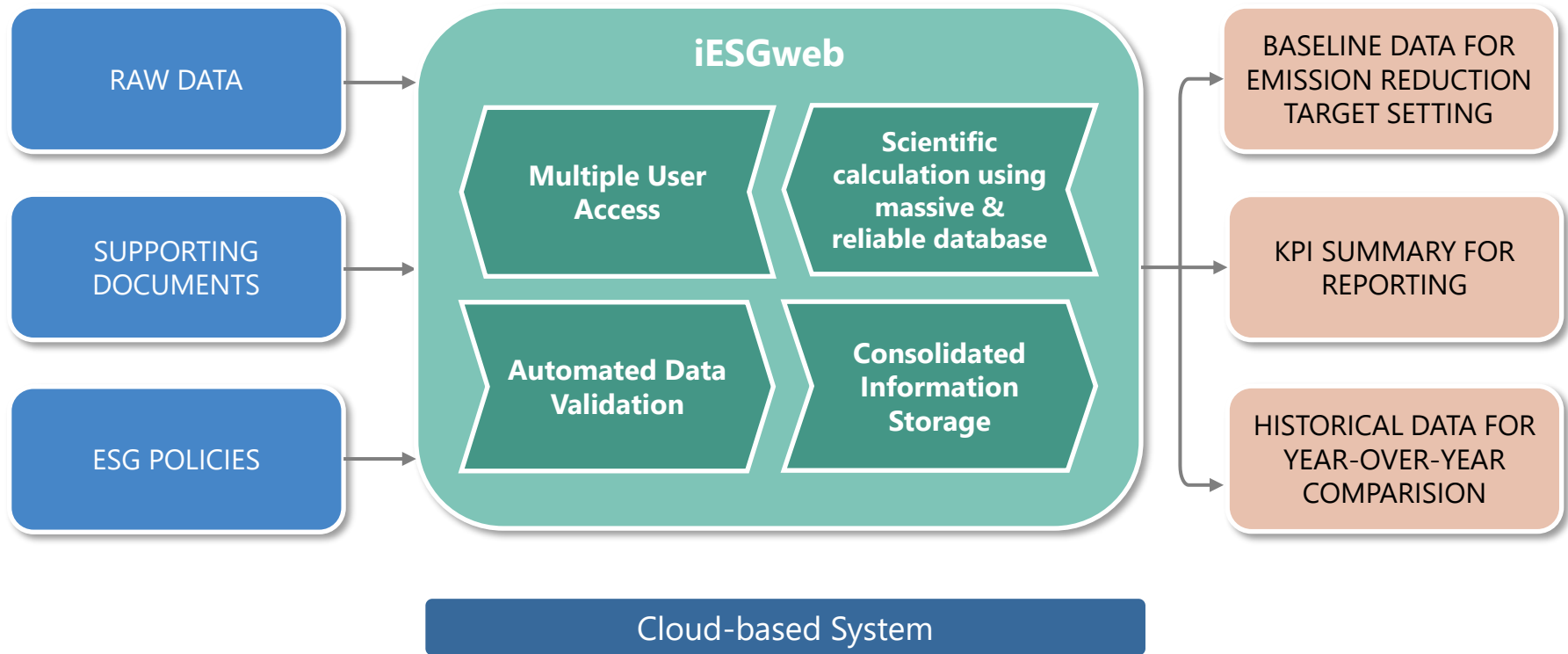
Cost-effective and ready-to-use data repository supports seamless updates while zero infrastructure is needed.



Compliance Solution

Support for ESG Reporting Guide in **the Listing Rules of HKEX** and help you meet your compliance obligations.

ONE-STOP ESG REPORTING SOLUTION



PERMISSION MANAGEMENT



The screenshot displays the 'Permission Management' interface. On the left, a 'User List' contains the following users: marco marco (highlighted), Amy, Chris, Sally, Bonnie, and Sam. On the right, the 'User Permission' section features a 'SUBMIT' button and a table of permissions:

<input checked="" type="checkbox"/>	Company Full Name	Company Short Name	
<input checked="" type="checkbox"/>	ABC Company	ABC	▼
<input checked="" type="checkbox"/>	DEF Company	DEF	▼
<input checked="" type="checkbox"/>	HIJ Company	HIJ	▼
<input checked="" type="checkbox"/>	PQR Company	PQR	▼
<input checked="" type="checkbox"/>	XYZ Company	XYZ	▼

USER PERMISSION

Access control for central management of robust data

iESGweb enables access compartmentalization based on workgroups within an organization.

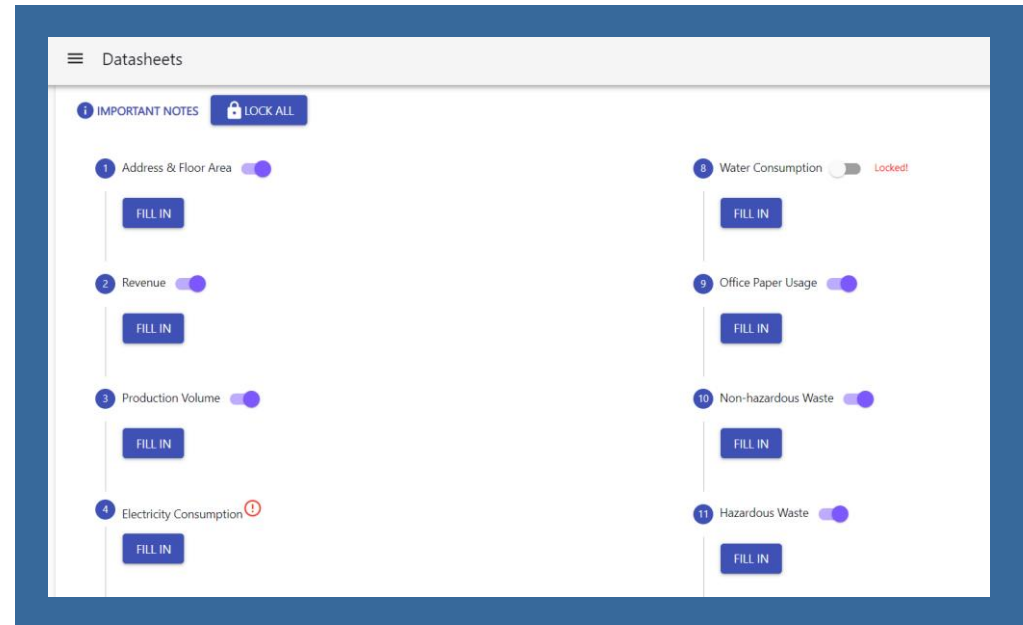
PROJECT MANAGEMENT



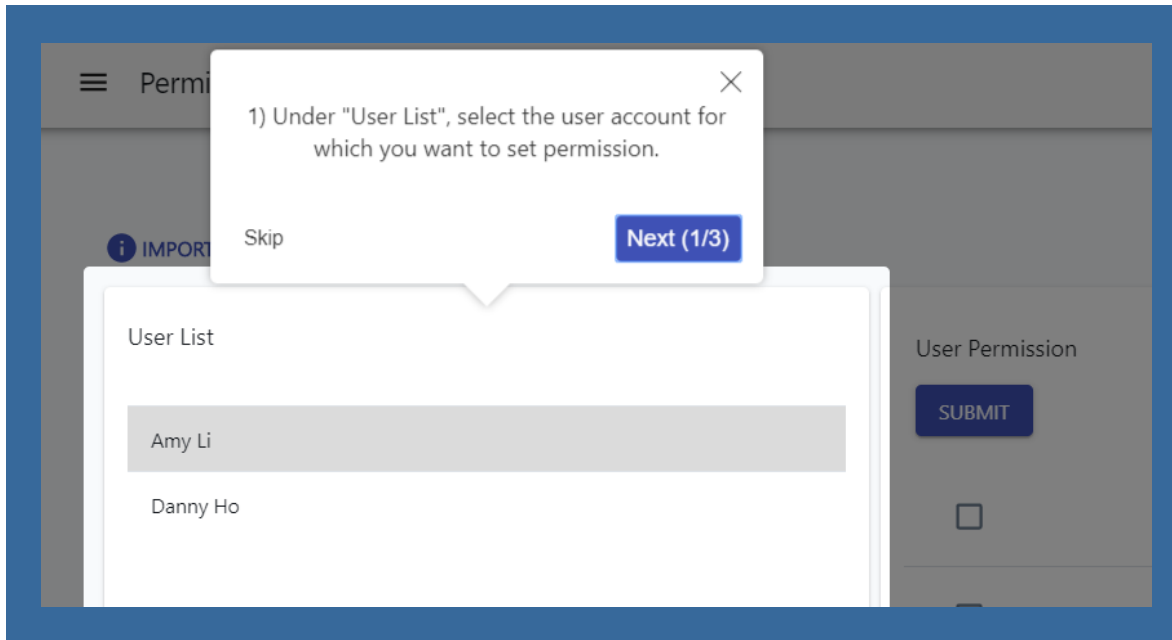
DATASHEETS OVERVIEW

One place for managing work in real time

iESGweb allows you to monitor data collection progress and spot any errors. Finalized data can be locked to restrict data alteration.



STEP-BY-STEP GUIDANCE



TUTORIAL FOR BEGINNERS

Best way to make learning simple

iESGweb's tutorial helps new users to discover everything they need to know about the platform and build confident on how to navigate it.

DATA QUALITY CONTROL



INPUT AND DATA VALIDATION

**Completeness,
uniqueness,
timeliness,
consistency,
validity**

iESGweb's automated validation helps to identify any incomplete inputs, duplicate data, incorrect formats, and null field values.

Electricity Consumption

Datasheets > Electricity Consumption

IMPORTANT NOTES | START TUTORIAL

+ ADD ENTRY | CLONE | DELETE | SAVE

	Company Full Name	Address on Electricity Bills	* Meter Number	* Power Source	* Location
8	Best_001	No.1, Healthy St, Sha Tin, HK	N/A	(购电)国网 Citygrid	
9	Best_001	No.1, Healthy St, Sha Tin, HK	N/A	(购电)国网 Citygrid	
10	Best_001	No.1, Healthy St, Sha Tin, HK	N/A	(购电)国网 Citygrid	
11	Best_001	Missing: 3/F, TST building, Kln, HK	N/A	(购电)国网 Citygrid	
12	Best_001	No.1, Healthy St, Sha Tin, HK	N/A	(购电)国网 Citygrid	

DATA INTEGRITY CONTROL



The screenshot displays a web interface for data management. At the top, there are four buttons: '+ ADD ENTRY', 'CLONE', 'DELETE', and 'SAVE'. Below these is a table with two main columns: 'Company Full Name' and 'Address on Electricity Bills'. The table contains four rows, each with the same data: 'Best_001' and 'No.1, Healthy St, Sha Tin, HK'. A tooltip is overlaid on the second row, stating: 'Please upload supporting documents here. It supports JPG, PNG, PDF, DOC, DOCX, XLS, XLSX format.' The interface also includes icons for adding and deleting entries in the first column.

	Company Full Name	Address on Electricity Bills
1	Best_001	No.1, Healthy St, Sha Tin, HK
2	Best_001	No.1, Healthy St, Sha Tin, HK
3	Best_001	No.1, Healthy St, Sha Tin, HK
4	Best_001	No.1, Healthy St, Sha Tin, HK

ONLINE DOCUMENT UPLOAD

Preparation for third-party assurance

iESGweb facilitates self-upload of supporting documentation, which is essential for the verification of reliability and trustworthiness of data or independent assurance process.

EFFORTLESS OUTCOME



KPI SUMMARY

Ready-to-use data output

iESGweb computes all KPIs in ESG Reporting Guide of the Listing Rules by HKEX.

ENVIRONMENTAL KPI SUMMARY

KPI	DESCRIPTION	VALUE	UNIT
KPI A1.1			
	AIR EMISSION (NOx)	405.10	kg
	AIR EMISSION (SOx)	0.90	kg
	AIR EMISSION (PM)	12.11	kg
KPI A1.2			
	GHG EMISSION IN TOTAL (SCOPE 1, SCOPE 2 AND SCOPE 3)	1194.20	Tonnes of CO2e
	GHG EMISSION INTENSITY (SCOPE 1, SCOPE 2 AND SCOPE 3)	0.02	Tonnes of CO2e/m2
	GHG EMISSION IN TOTAL (BIOGENIC)	0.00	Tonnes of CO2e
	GHG EMISSION (SCOPE 1)	136.37	Tonnes of CO2e
	GHG EMISSION (SCOPE 2)	1040.08	Tonnes of CO2e
	GHG EMISSION (SCOPE 3)	17.75	Tonnes of CO2e
	GHG REMOVAL BY TREE PLANTING	0.00	Tonnes of CO2e
KPI A1.3			
	TOTAL HAZARDOUS WASTE PRODUCED	36.97	Tonnes
	HAZARDOUS WASTE PRODUCED INTENSITY	0.50	Tonnes/m2
KPI A1.4			
	NON-HAZARDOUS WASTE PRODUCED	319.45	Tonnes
	NON-HAZARDOUS WASTE PRODUCED INTENSITY	4.31	Tonnes/m2
	TOTAL WASTE DISPOSED	232.69	Tonnes
	TOTAL NON-HAZARDOUS WASTE COLLECTED FOR RECYCLING	86.76	Tonnes
KPI A2.1			
	ENERGY CONSUMPTION IN TOTAL	1710.29	kWh
	ENERGY CONSUMPTION IN INTENSITY	0.02	kWh/m2
	PURCHASED ELECTRICITY	1186.32	kWh
	SOLAR ENERGY	0.00	kWh
	PURCHASED TOWNGAS	319.04	kWh
	DIESEL OIL	95.23	kWh
	LPG	0.00	kWh
	NATURAL GAS	0.00	kWh
	UNLEADED PETROL	109.71	kWh
	BIOMASS	0.00	kWh
KPI A2.2			
	WATER CONSUMPTION IN TOTAL	18196.73	m3
	WATER CONSUMPTION IN INTENSITY	0.25	m3/m2
KPI A2.5			
	PACKAGING MATERIALS	0.00	Tonnes
	PACKAGING MATERIALS INTENSITY	-	Tonnes/m2

TRUSTED BY MANY



Many teams are already using iESGweb to streamline their ESG reporting workflow and manage ESG data collection process better and faster.



Are you ready to start collecting data? Or are you still searching for an efficient, cost effective data collection platform?

Revolutionize Your ESG Data Collection Process with AVISTA iESGweb Platform TODAY !

